



The European Training Strategy Competence Model for Youth Workers To Work Internationally

European Training Strategy (ETS) – What for?

Main strategy for
the **development of
quality youth work.**

Supports **linking
youth policy
developments in
youth work** with the
capacity building of
youth workers

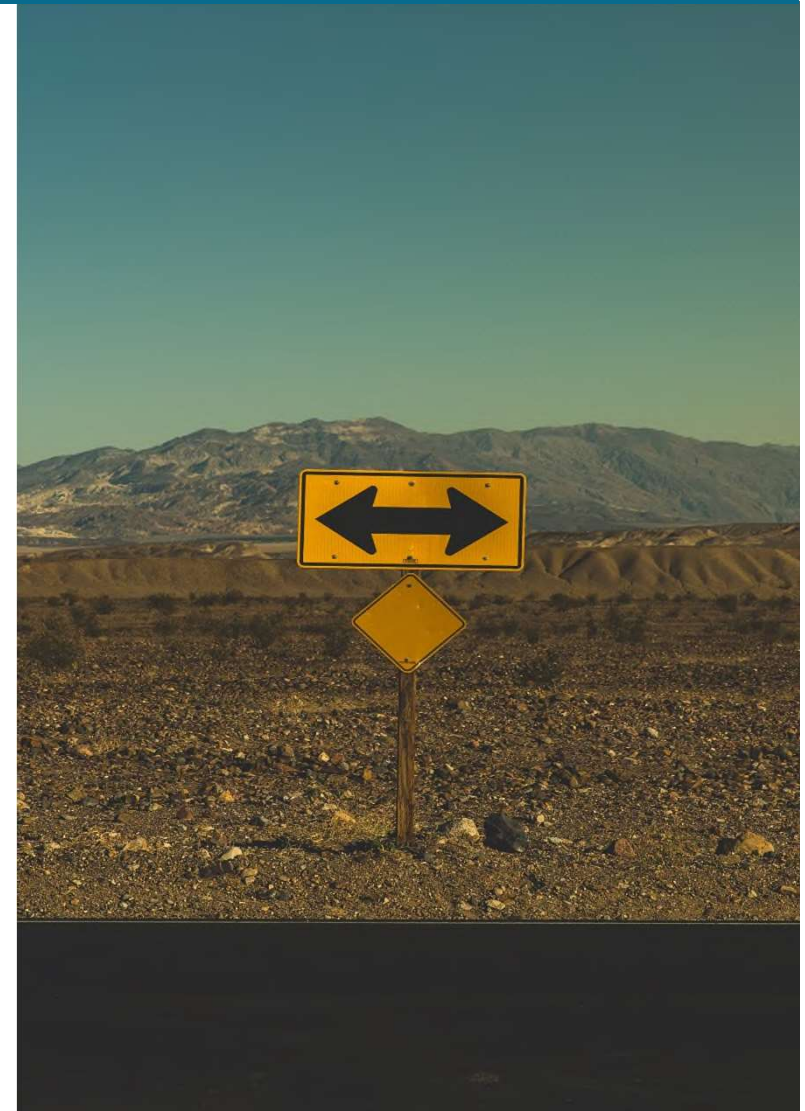


The implementation
of the ETS started
under the previous
YOUTH and Youth in
Action programmes,
and continues now
under **Erasmus+:
Youth in Action (and
beyond :)**

ETS – What does it focus on and who is it for?

Capacity building as one of the key elements for the development of quality youth work in Europe

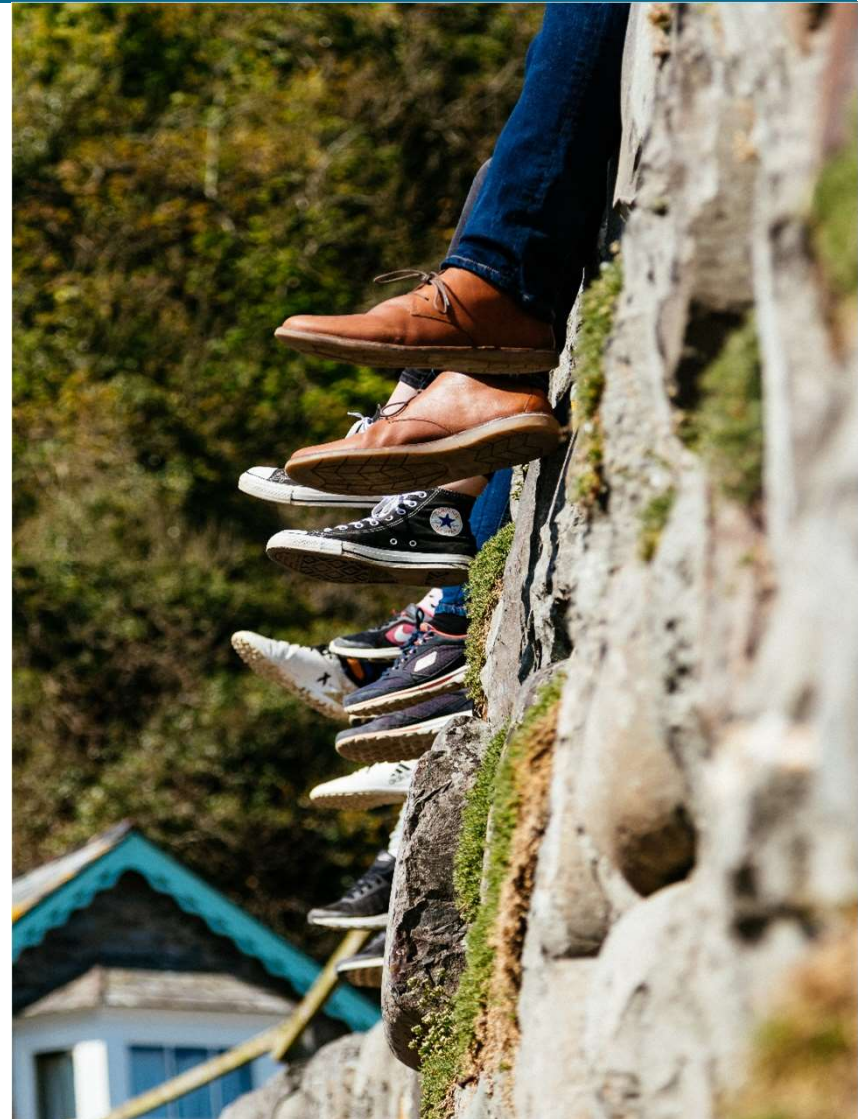
- **Support for individuals**
- **Organisationa
l
development**
- **Systemic
framework
development**



ETS: fields of actions

The ETS is articulated around a series of processes, features and knowledge, divided into several areas:

- Competence development and learning
- Online support and tools
- Contribution to building [more] knowledge about capacity building in youth work



ETS: A competence-based approach



The focus is moving towards learning as a **lifelong and life-wide** process with an emphasis on the development of competences.

Capitalising on learning throughout a **whole range of activities and experiences** over a longer period.

ETS Competence Model for Youth Workers: for what and for who?



Main intentions

- **ignite and inspire** - serve as a framework for **orientation and guidance**,
- **support** - lead to **better recognition** of the contributions of international youth work to society,
- **provide** / lead to appropriate **capacity-building strategies**.

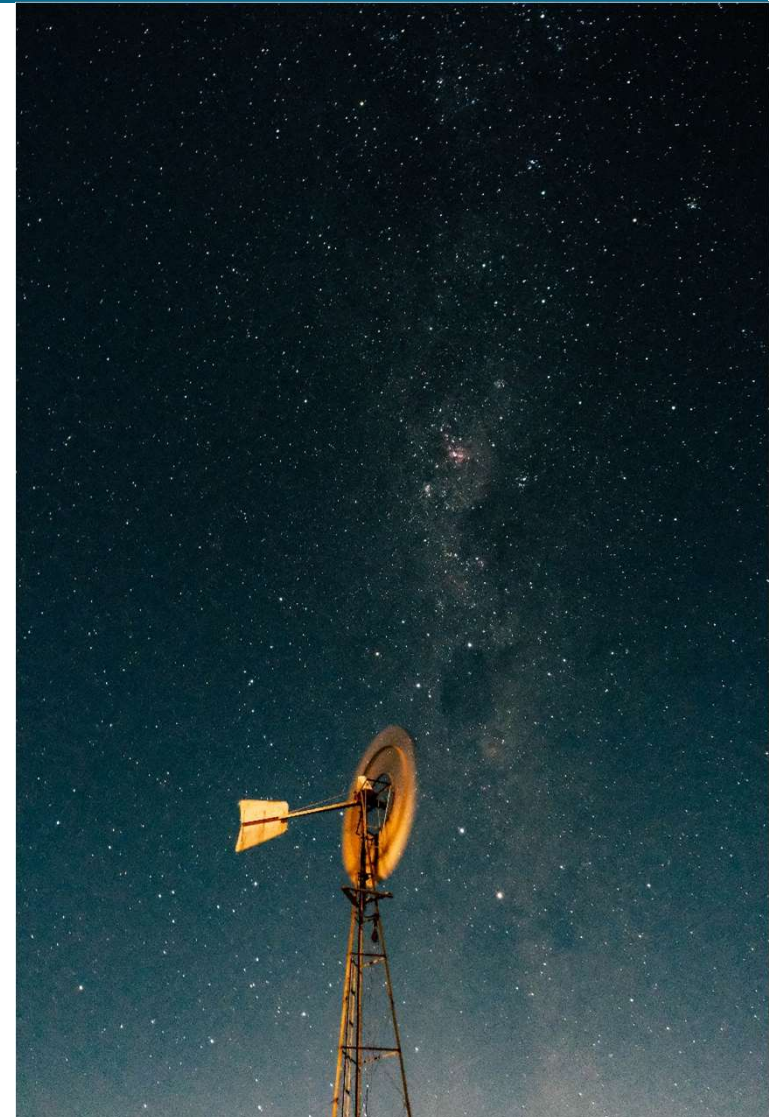
The target groups are

- **Youth workers**
- **Support staff / educators - trainers**
- **Organisations and institutions**

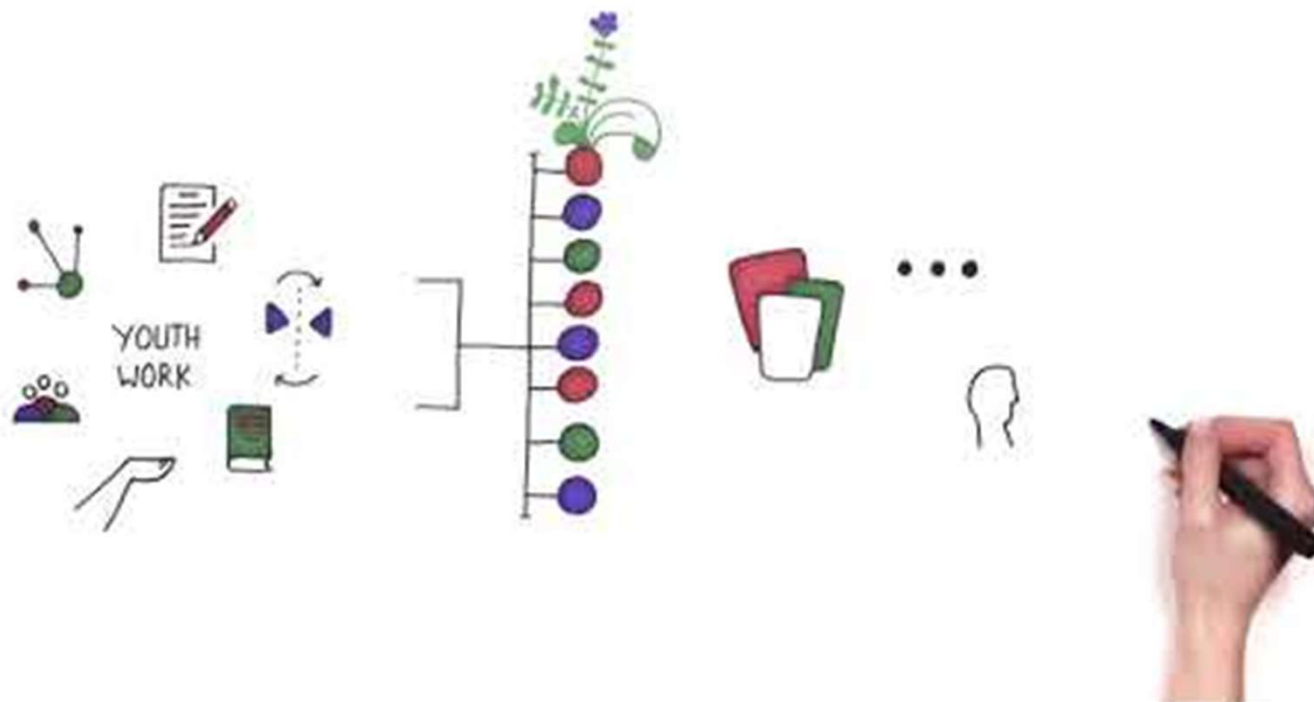
ETS Competence Model for Youth Workers: the international dimension

Characteristics of international youth work:

- happens with **international colleagues/in international teams**, in most cases in another language than the native one,
- **value-oriented** contexts, e.g. as in European programmes: participation, inclusion, democracy, etc.
- the mainly **residential character** of activities,
- the **political contexts**, be it in Europe or in worldwide environments.
- And more...

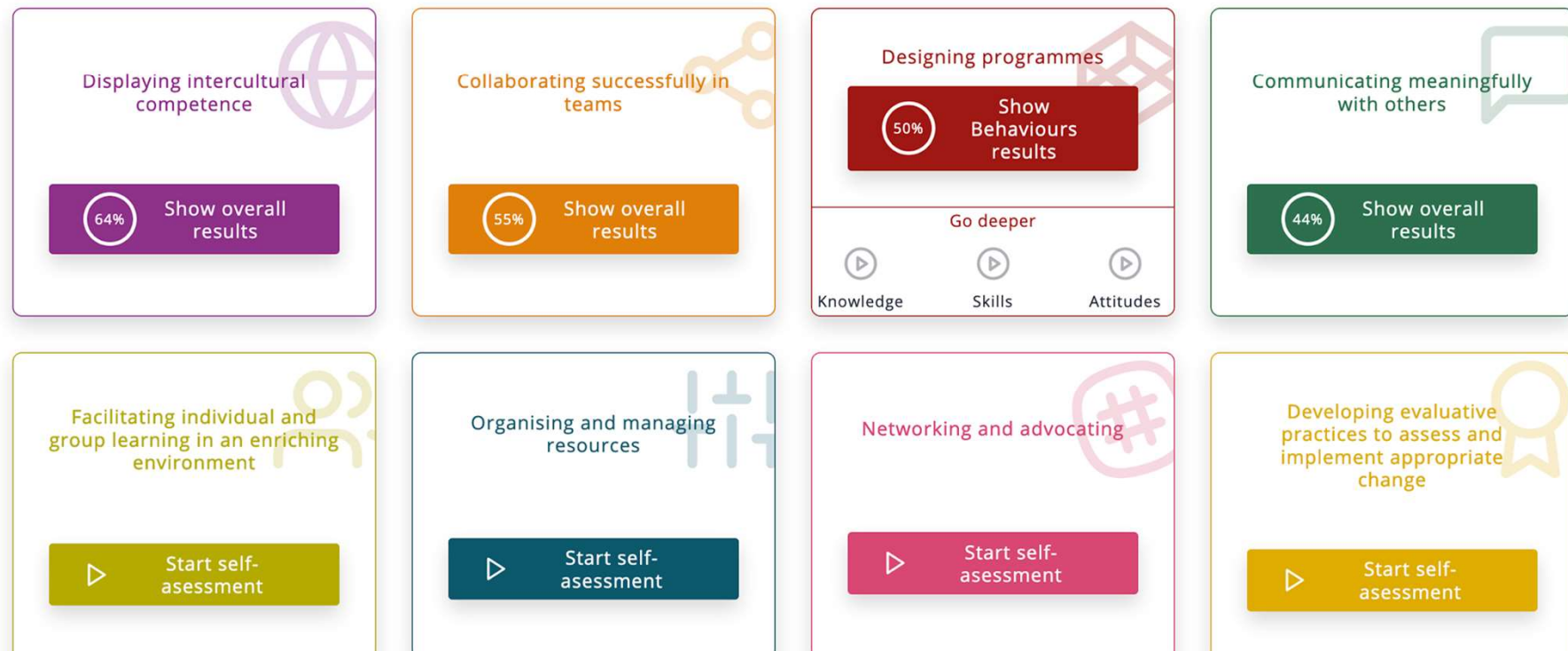


ETS Competence Model for Youth Workers To Work Internationally

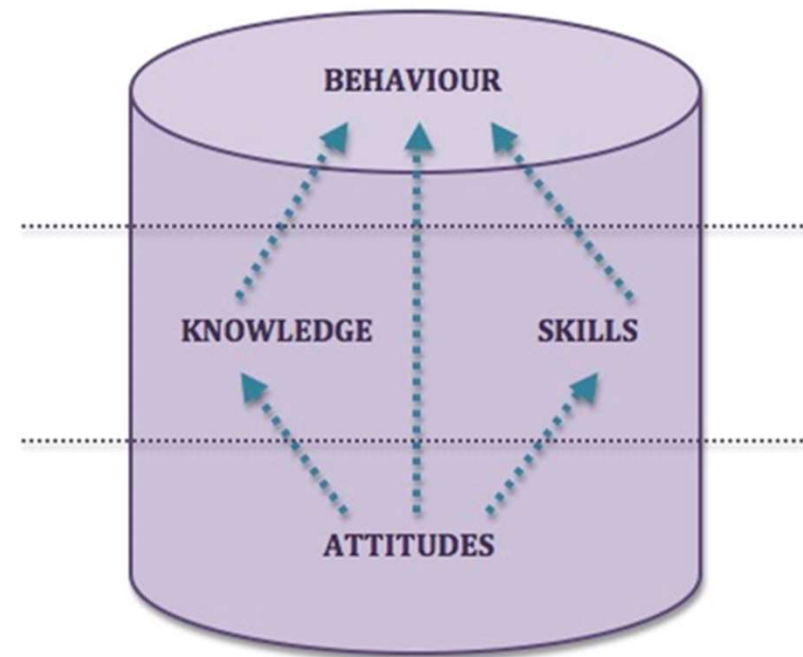
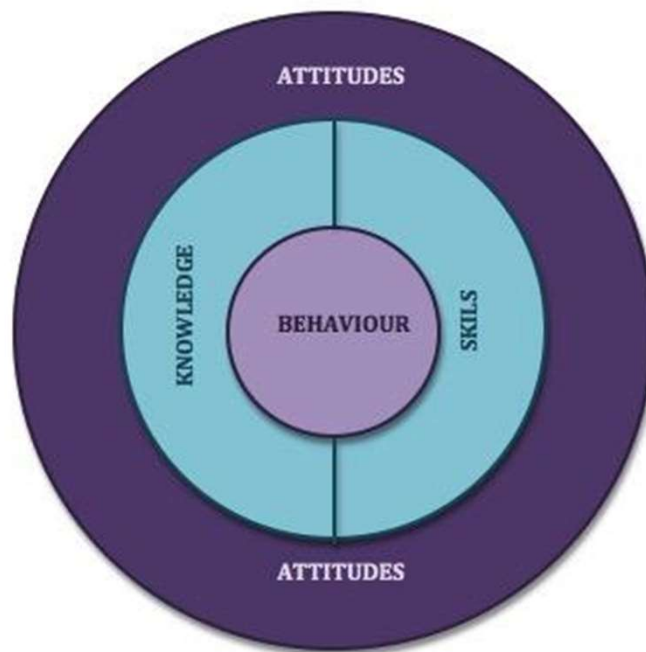


ETS Competence Model for Youth Workers: competence areas

 Summary  Chart



ETS Competence Model for Youth Workers: the structure & the approach



ETS Competence Model for Youth Workers: much more than that!



ETS Competence Model for Youth Workers: qualities



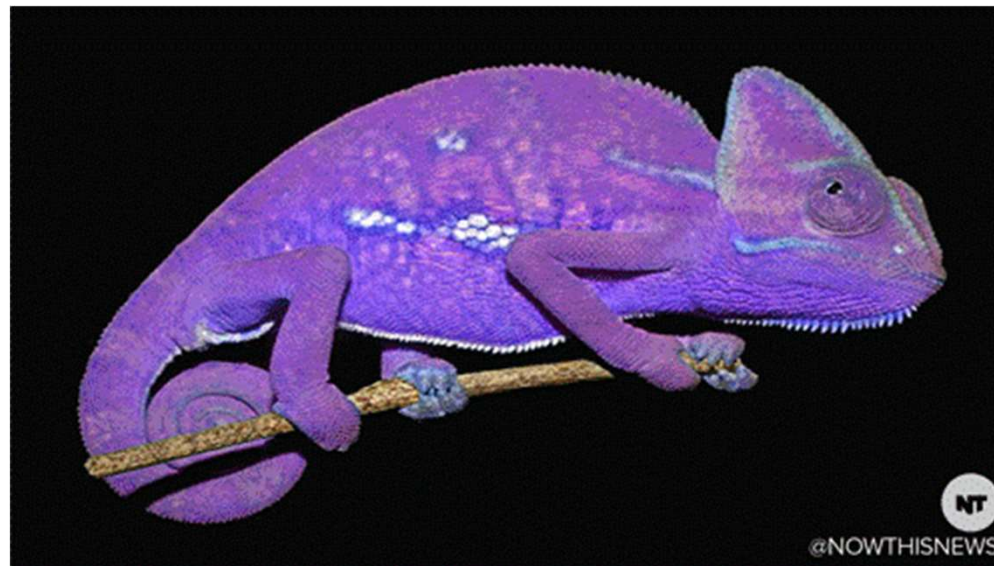
It's developing.

ETS Competence Model for Youth Workers: qualities



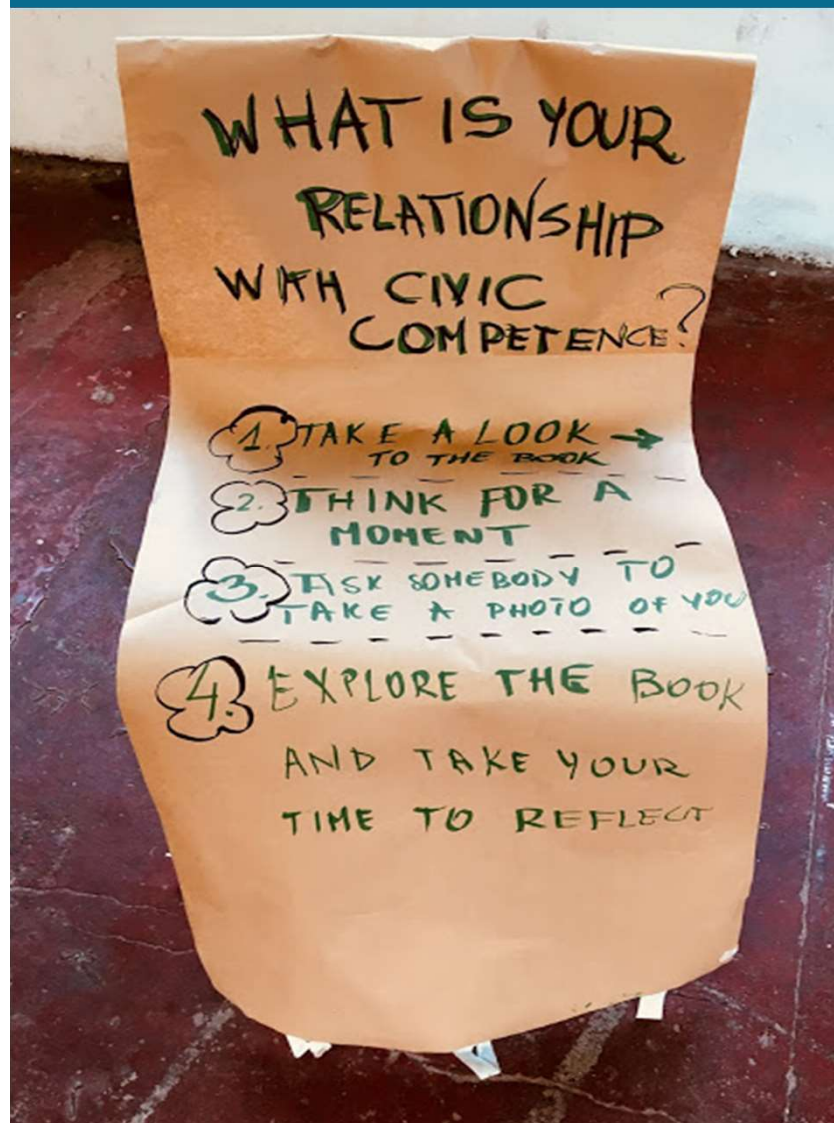
It's complementary.

ETS Competence Model for Youth Workers: qualities



It's adaptable.

ETS Competence Model for Youth Workers: how to use it?



A few examples:

- Design of curriculum for training of youth workers (European –national courses)
- Simplification of the model for expert groups
- Tool for self-assessment in a given area, by youth workers
- Tool for advocacy and recognition
- Peer learning and cross-sectoral cooperation
- ...

ETS Competence Model for Youth Workers: how to use it?



Competence level: 50%



Interpret your results

Continue to self-assessment of your knowledge, skills and attitudes

Knowledge

▶ Start self-assessment

Skills

▶ Start self-assessment

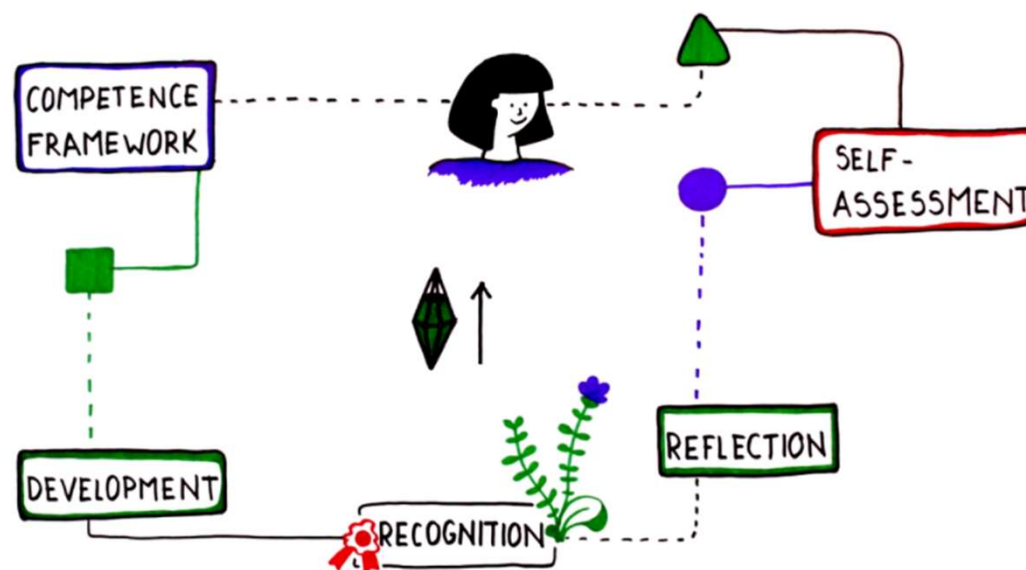
Attitudes

▶ Start self-assessment

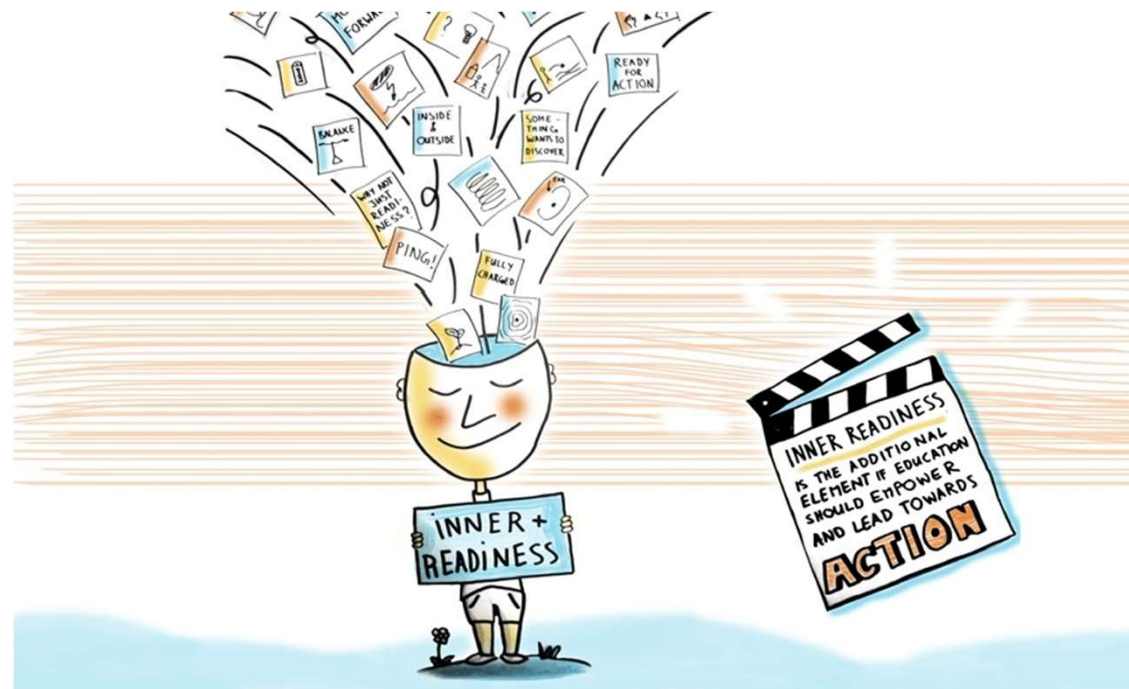
ETS Competence Model for Youth Workers: how to use it?

Welcome to YOCOMO – an ETS online course on competence-based development for youth workers!

It is a space where you can explore and learn about competences for youth work. This course will provide you with opportunities to meet peer youth workers and discuss questions around self-assessment, the content of competences and ways you can develop them further on.



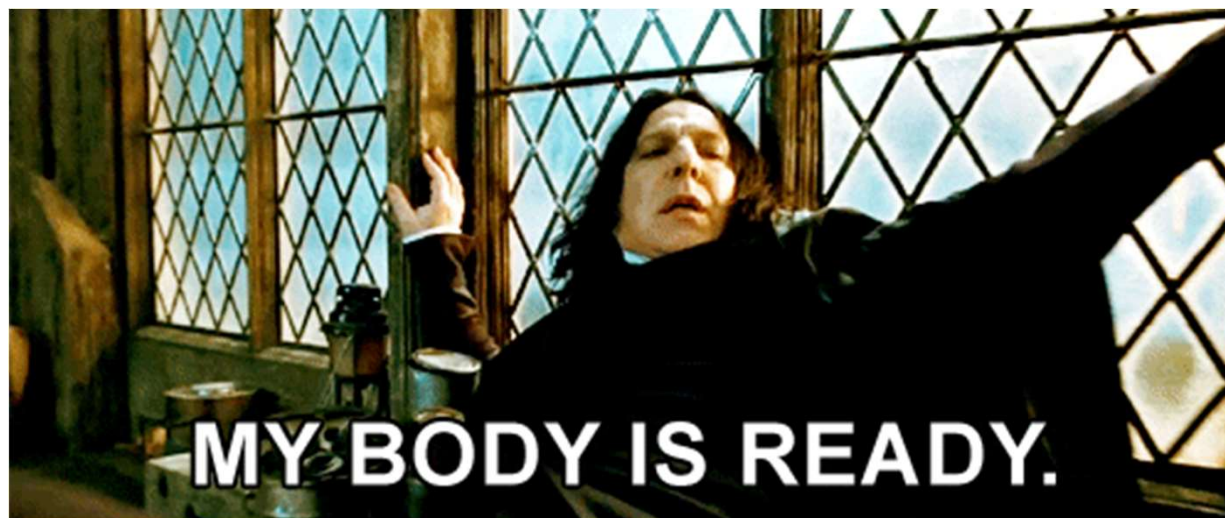
ETS Competence Model for Youth Workers: are you ready?



Authenticity

Intuition

ETS Competence Model for Youth Workers: are you ready?



Thank you very much for your attention!

Contact SALTO T&C RC
Snežana Bačlija Knoch,
yocomo@salto-youth.net

Pictures (in order of appearance): Teddy Kelley, Simson Petrol, Pablo Garcia Salana, James Baldwin, Annie Spratt, Emily Goodhart, Mark Adriane, Karly Santiago, Daniel Cheung, Alejandro Salarez, for Unsplash, and Vojislava Tomic.